

WAVERLY AVENUE (CR 19) HIGHWAY & INTERSECTION IMPROVEMENT STUDY

Patchogue, NY

Client

Suffolk County Department of Public Works
335 Yaphank Avenue
Yaphank, NY 11980
631-852-4002

Contact: William Hillman, PE
Chief Engineer

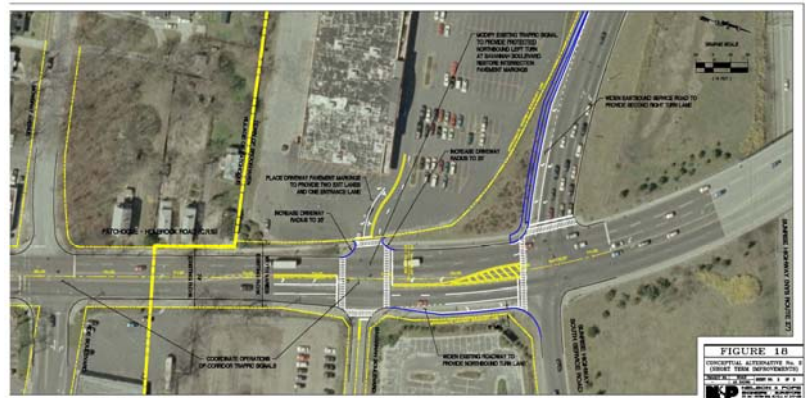


Project Description

Nelson & Pope conducted a highway safety and capacity improvement study of a one-mile section of Waverly Avenue, extending from Sunrise Highway South Service Road to Old Waverly Avenue (Holbrook Road). The study identified existing and future operational and safety problems along the corridor and developed potential short and long-term alternative improvement measures. Problems identified included traffic congestion, high accident frequency, speeding and poor traffic signal coordination. Improvement measures developed included widening some sections of Waverly Avenue to improve capacity, installation of a new traffic signal, coordination of traffic signals and modification of traffic signal timing and phasing.

Relevant Project Components

- Traffic/Speed Data Collection
- Inventory of Existing Conditions
- Identification of Non-Standard Features
- Accident Analysis
- Traffic Calming Measures
- SYNCHRO Traffic Analysis
- Development of Short & Long -Term Improvements
- Cost-Benefit Analysis
- Preparation of Highway & Intersection Improvement Study Report



**NELSON & POPE
ENGINEERS & SURVEYORS**