

**SUFFOLK COUNTY SEWER DISTRICT 15—NOB HILL
STRUCTURAL REHABILITATION
TOWN OF ISLIP, NY
SUFFOLK COUNTY DEPARTMENT OF PUBLIC WORKS**

**ENGINEERING
SURVEYING
PLANNING
ENVIRONMENTAL**

**FEASIBILITY & DUE
DILIGENCE ASSISTANCE
LAND & SITE PLANNING
SURVEYING & MAPPING
CIVIL ENGINEERING
TRAFFIC & HIGHWAY
ENGINEERING
SANITARY ENGINEERING
RECREATIONAL FACILITY
PLANNING & DESIGN
MARINE & WATERFRONT
ENGINEERING
STRUCTURAL DESIGN &
ENGINEERING
STORMWATER
MANAGEMENT PLANNING
PERMITTING & PROCESSING
ENVIRONMENTAL
CONSULTING
SERVICES DURING
CONSTRUCTION**

**MEETING THE NEEDS OF OUR
CLIENTS SINCE 1954**

NELSON & POPE

572 Walt Whitman Road
Melville, New York
11747

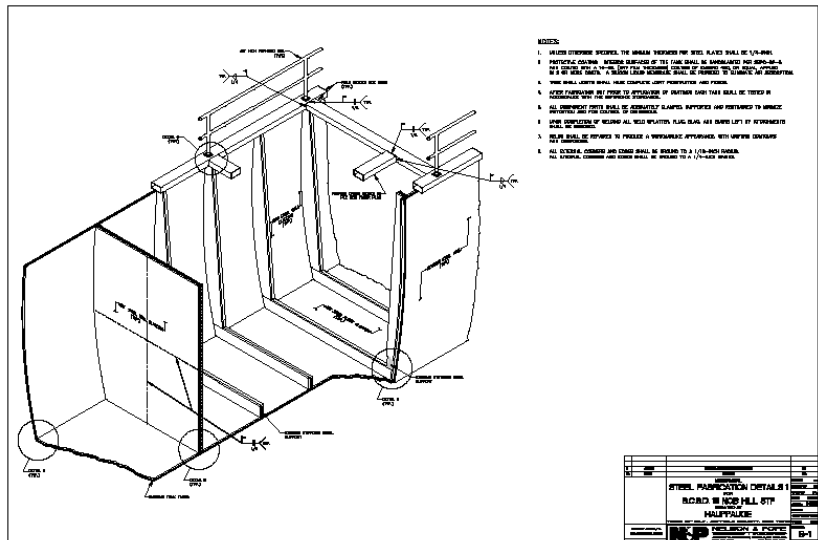
PHONE: 631-427-5665
FAX: 631-427-5620
NP@NELSONPOPE.COM

PROJECT TYPE: REHABILITATION PROJECT
PROJECT SCOPE: STRUCTURAL ANALYSIS AND REHABILITATION PLAN
DEVELOPMENT TO EXTEND STP USEFUL LIFE
CONSTRUCTION COST: \$1.4M

DESIGN TEAM:
N&P STRUCTURAL ANALYSIS, STRUCTURAL DESIGN, CONTRACT DEVELOPMENT
UNIVERSAL TESTING: STRUCTURAL TANK TESTING

RELEVANT COMPONENTS:

- TANK TESTING
- EXISTING CONDITIONS SURVEY
- REHABILITATION DESIGN DRAWINGS
- REHABILITATION SPECIFICATIONS
- LEAD PAINT TESTING
- COST ESTIMATE



STRUCTURAL TANK TESTING AND ANALYSIS, PREPARATION OF CONSTRUCTION CONTRACT DOCUMENTS FOR RECONSTRUCTION ALL PROCESS TANKAGE AT THE PLANT. PERFORM FIELD TESTING TO DETERMINE RELEVANT TANK THICKNESS AS WELL AS LEAD PAINT TESTING. THE PRELIMINARY DESIGN HAS BEEN COMPLETED. THE PROJECT SCOPE INCLUDES THE COORDINATION WITH THE SCDPW—OPERATIONS DIVISION TO COORDINATE PLANT OPERATIONS DURING THE REHABILITATION. N&P IS CURRENTLY PERFORMING FULL TIME INSPECTIONS DURING CONSTRUCTION PHASE. THESE SERVICES INCLUDE HOLDING MONTHLY MEETINGS, GENERATING MONTHLY MEETING MINUTES, REVIEW PAYROLL RECORDS AND PROCESS PAYMENTS ACCORDING TO COUNTY CONTRACT.

